



Thinking globally, creating vigorously

Founded in 1998 by Wilhelm von Vnukov, ART STUDIOS ENTERTAINMENT MEDIA CO., LTD has enjoyed valuable reputation with its highly capable design, the quality manufacturing and the vigorous innovation in multimedia products and computer peripherals.

What's particularly special of the venture is that ASEM founder is constantly involved in each product's manufacturing, setting requirements of satisfaction and standard of each product.

Navigating the river of information, ASEM embraces exciting possibilities that make differences in the world, that advance people's enjoyment in technologies, pushing the frontier of modern science which supports human success, creating striking values with innovative ingenuity.



Meeting the world's needs beyond limits

As the inventor of the one and only BPU (Boot Processing Unit) hardware, ASEM unifies several functionalities in one instrument, such as full AEFI (ASEM Extended Firmware Interface) environment for generic PC, the first Hardware Boot Manager, Client-Server based analyzer and debugger system.

ASEM's dynamic capabilities in hardware & software development have enabled the company to expand product ranges and to serve people by delivering comprehensive product portfolios, which unleashes a variety of cutting edge technologies including IC design, ASIC production, Industrial robots machinery, and software design such as 3D computer engines, system drivers, GUI for software, firmware for any type of hardware and BIOS / EFi development, peripheral add-in cards, controllers and so on.

Via strategically located R&D teams around the world and the effective supply chain management, our global experiences help customers tackle complicated challenges, offer unprecedented OEM, ODM service and customized software & hardware solutions.



Livening up new technology

ASEM maintains its market competitiveness by its legacy application, innovative technologies and the fundamental care for the sustainable environment.

Our conspicuous achievement--the in-house development EFiX™ allows almost any desktop personal computer (PC) users to install Mac OS X, Linux, and all versions of Microsoft Windows, without hassles of reconfigurations and extra investments.

The design extraordinaire makes new technology accessible and affordable to individuals, communities, companies and governments alike; with this one and only BPU (Boot Processing Unit) in the market users are free from data damages and virus attacks on booting stage, as EFiX™ keeps entire booting environment away from your storage media.

Users with broken Mac-Pro's, disregarding types of models, will be able to take storage media out of their damaged system and plug it in to EFiX™ machine in order to backup data, or just to further continue the work without interruptions or any extra cost while your Mac-Pro is in repair center.



We give careful consideration to each customer's specific conditions and working processes.

In order to simplify your work, we have been collecting years experience in different industrial zones:

1. Printing houses and publishing houses:

Specific requirements are taken into account when we're working on product upgrading, firmware updating and new designs.

2. Education institutes and education systems:

Its affordable price reduces education institutes' cost, and assists individual students an easier way in pursuing extensive education in liberal arts, art and science.

When students are professionally trained in many technical projects, or in aesthetic aspects of school works, they will be able to utilize the unit to sharpen skills necessary for a successful professional career.

3) Data recovery centers:

Help your "panicking" customers in versatile ways to rescue, backup or save their work with only one multifunctional EFiX™ system.

4) Server Centers & System Integrators

Using several OS on one machine has never been easier thanks to the EFiX™.

5) Military & Air space

6) Manufacturing industry

7) Sound Engineering studios / Recording Studios.

Use any desired music production software on just one EFiX™ system

8) Film production:

From filming, video and sound editing, audio mixing, cutting in the production area, EFiX™ helps you backup data, and continues the work without interruptions by offering extremely upgradable system. Once your hardware gets problems due to overwork, you can use any common replacements available nearby by your place.

9) Photography and Imaging: Support needs in daily life of photographer.

10) Music composers:

No matter you're beginner or professional in studio setup, you'll gain added values with EFiX.

11) Painters and Visualization:

Artists' needs in Design Drawing, Computer Graphics, Computer Aided Design, Media Integrated Design and Planning of 3D Animation are supported.

12) Software & Hardware developer:

As a hardware or software developer, you will gain unparallel advantages with universal unified multi OS EFiX solution. Including iPhone software developers, iPad software developers, Mac OS X software developers.

EFiX is featured with its extremely updatable software and firmware, so users will be able to upgrade its functionality and features to help the work, which actually echoes ASEM's intention of maximizing people's work performance and saving users' investment.



Interactive software development

GAME DEV & 3D Engine development department

Our expertise encompasses all facets for writing all sort of 3D Gaming programming and applications development, for instance by using the latest 3D engines, scripting languages and animation techniques, our experienced and qualified team deals with all kind of requirements, and we endeavor to offer compelling solution and eminent support to customers.

Most importantly, we spared no effort to develop this powerful, in-house software - 3D-Engine, ARTiX™, which is designed with ease of content creation and programming in mind, with the goal of putting as much power as possible in the hands of artists and designers to develop assets in a visual environment with minimal programmer assistance; and to give programmers a highly modular and extensible framework for building, testing, and shipping games in a wide range of genres. Features of ARTiX™ give artists and level designers virtually limitless control.



Ancient Gate

First person shooter and adventure game



The Ancient Gate, First person 3d action game is currently on the way to come.

Developed with our in-house software - 3D Engine, ARTiX™, we extremely accentuate artistic creativity in Ancient Gate, from intricate plots, non-linear storyline to wondrous visualization. In the six expansive regions in a parallel universe, each with 1km square of highly detailed terrain, you're going to encounter a variety of unique creatures.

See heaps of bizarre flora and fauna, and also taste each vivid, true to life livings as you journey across the uncharted world.

Learn survival skills and master different levels of difficulties as you enter each unknown realm! Take challenges of mystical powers, probe into mysteries, and experience exotic lives in a real space-time adventure.



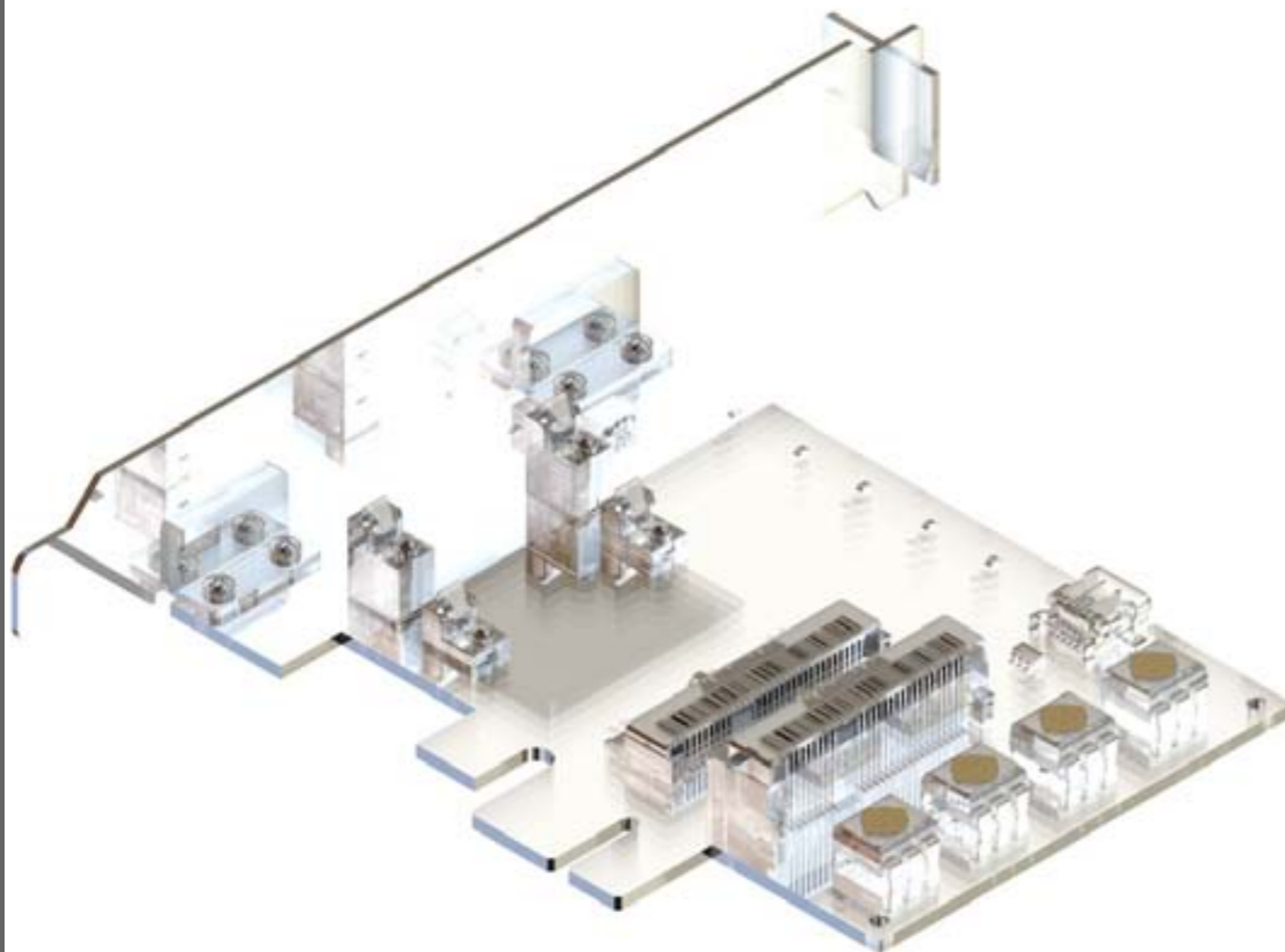
Electronic Manufacturing Department

Our Electronics Manufacturing Department provides full services to our OEM and ODM customers to establish competitive status in this rapidly changing industry. We support design development from scratch till the final product, complete manufacturing services, QA/QC Testing, certification process, depending on the customer's specific requirements.

Also, we support customer's design and service needs with various CAD tool capabilities.

These include schematic capture to deepen layout and electrical analysis.

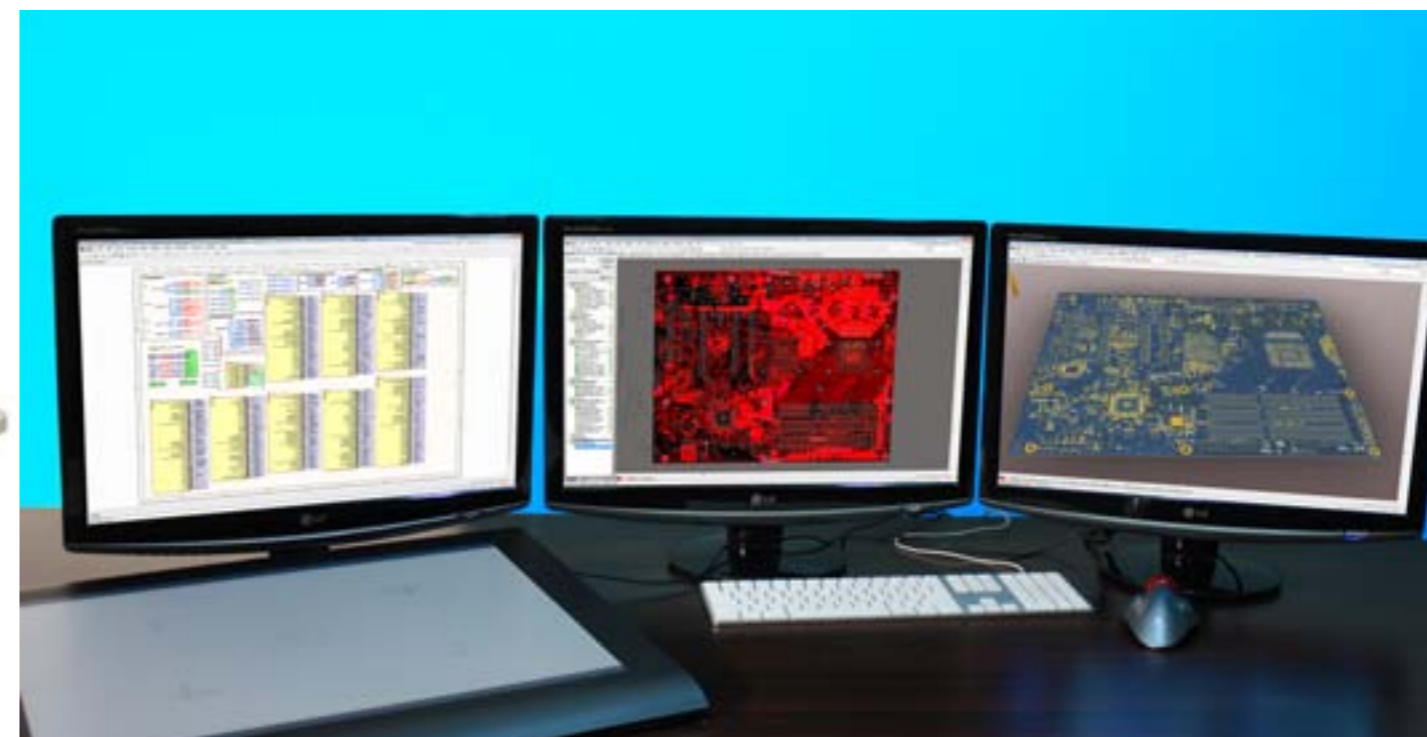
As we know clearly that product lifecycles are shrinking, and new technology is entering the marketplace at an accelerated rate; therefore ASEM is constantly committed to working closely with its customers to help them stay ahead of market trends.



R&D Department

With years manufacturing knowledge, ASEM has enjoyed outstanding reputation for its technical innovation, in-house software and hardware development. For years, ASEM is dedicated in developing cutting-edge technologies with a variety of features, and in creating solutions to simplify human life.

Following strict, proactive designed quality and environmental control standards which are far beyond the common requirements, our vertical integration capability, our global recruited engineers also enables us to provide one-stop, total solutions for customers.



Mechanical Engineering Department

Our mechanical engineering department offers services in:

Product Development and Consulting

Creating of Blueprints for products, including creating models and files for Mold-Plastic injection, bending manufacturing or CNC processes.

Flow simulations for Mold-Plastic injection

Routing and motion simulations for CNC manufacturing

Simulations for bending and material evaluation

1 – 7 or more Axis machinery and robotics design

CNC – machinery design

Production manipulators, robots and controllers design

Optimization of manufacturing processes with design of new mechanical robots and equipment in order to accelerate the manufacturing process and to better automatic manufacturing process.

This does include high precision robotics.

In order to create robots and machinery, this department works very closely with Software Development Department. We not only create mechanical components or robots, but even touch upon entire series of software to control the machines and robots.

ID Design & Visualization Department

This department specializes in Industrial Design, CAID/CAD, General 3D Modeling, Rendering and Visualization. From conceptual design to production sample of a device, we apply our first-hand experience, our profound emotion and feeling to each stage of the performance.

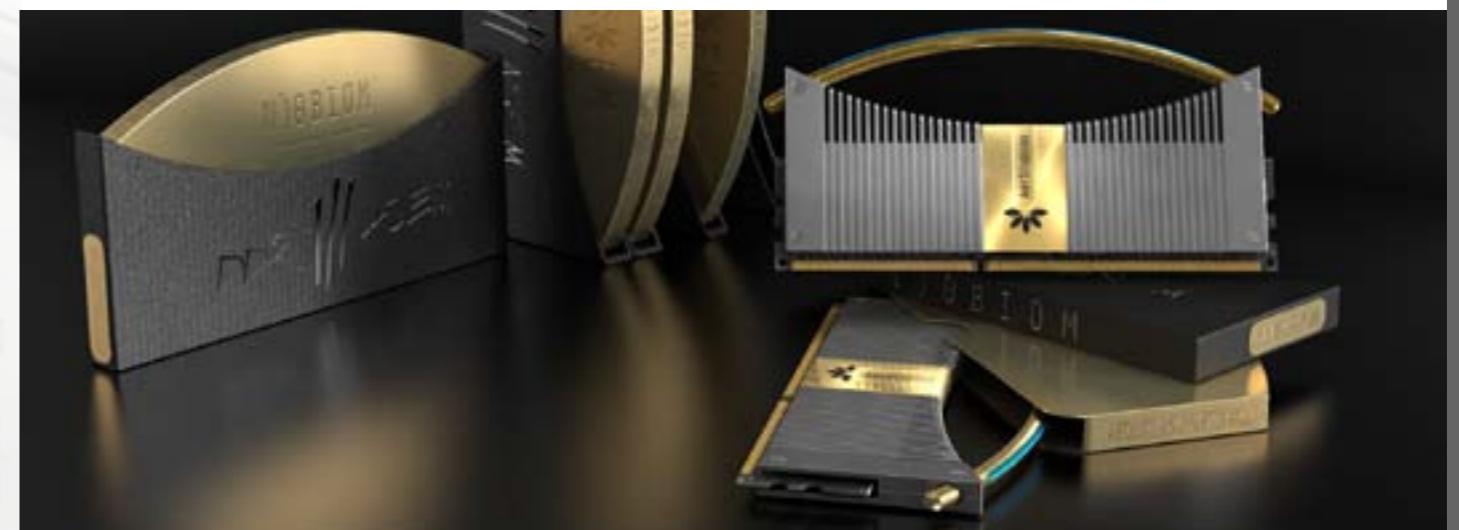
Worldwide famous designers focus on products branding, state-of-the-art 3D visualization design, and deal with the creative and aesthetic aspects of product design and development.

What's more, we also develop 3D eye-catching realistic movies with film-quality special effects for advertising your products.

Intensive works together with Mechanical Engineering Department is used to speed up the “design – to manufacturing” process. Examination of product appearance, tactile quality and practicability is processed here.

This kind of accurate internal communication allows us shape our imagination as wild as possible, negotiating ideas in person, and successfully overcome every obstacles we face whenever producing new products. Therefore, the so called “common sense about limitation” in modern manufacturing and science world does vanish in the way we process information.

The final confirmed design will be submitted to our Mechanical Engineering department for further exactitude, in order to create final blueprints for mass production.



IC Design (FPGA / CPLD / PLD), Microprocessor and Embedded Systems Design

FPGA/CPLD/PLD Design based on Altera, Xilinx, Lattice, Atmel and more; applied many years expertise in VHDL, ABEL and more.

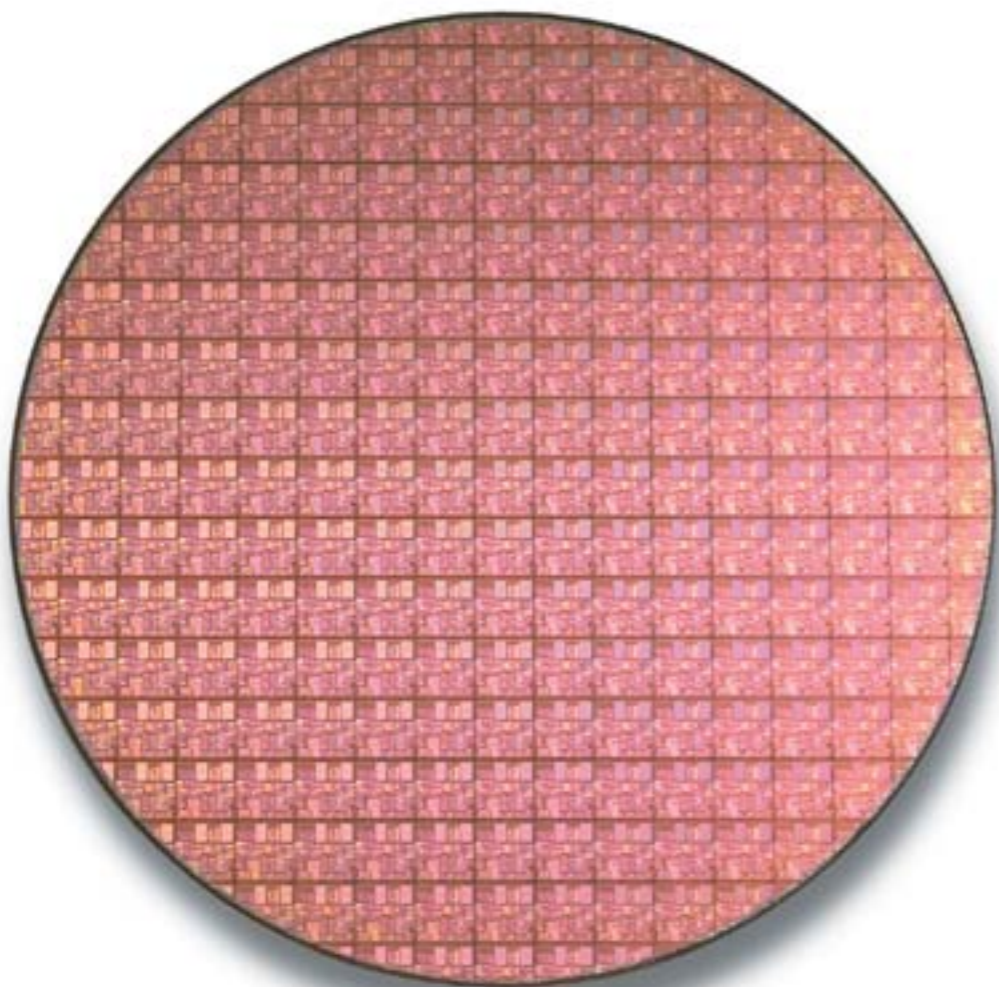
Microprocessor and Embedded Systems Design

Hardware and Software Design from scratch till final product.

We have experience with Intel, Motorola, Microchip, Atmel/AVR, Renesas, ARM9, ARM11, Cypress, Mitsubishi and many others.

By customizing unique components, intricate IC and schematic designs, also modifying, influencing the manufacturing processes, we become customer's heaviest guard over their intellectual properties.

Besides offering special solutions, we own several registered patents in this field.



PCB Layout Department

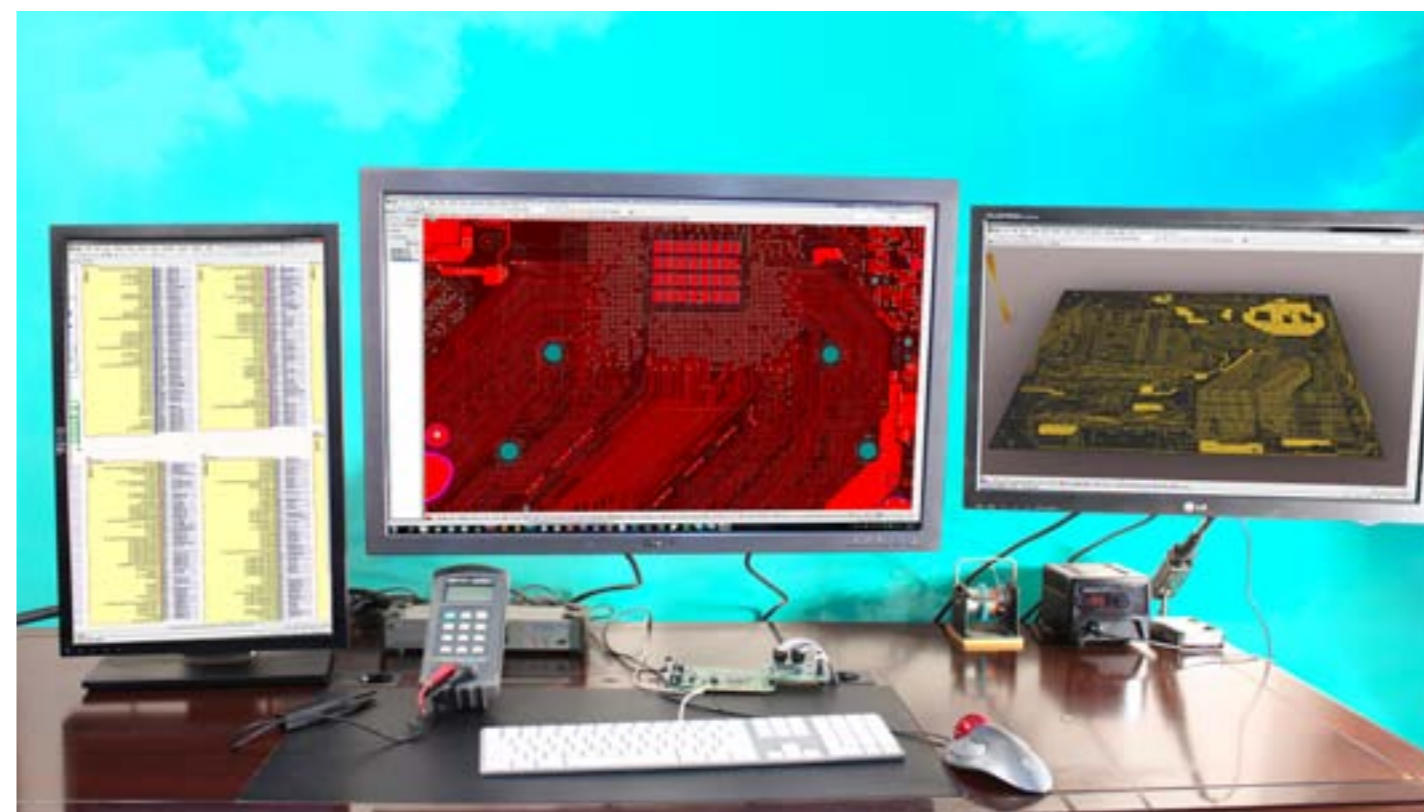
This department focuses on in-house design and layout for our PCBs.

Our design and layout service ensures customer's design from initial concept to a fully designed PCB, including hardware and firmware produced in other departments. In order to design truly unique PCB for your branded, special products, visual designers get involved all the way to give your PCBs impressive-looks.

We support customer design needs with various CAD tool compatibilities for schematic capture, board layout and electrical analyses.

The product launch cycle time is reduced and the next generation design is readily upgradeable through timely collaboration between the OEM customer and the engineering team.

We support various CAD tools for an efficient design exchange with each customer. These include Altium Designer, Cadence Allegro, Mentor Graphics PADS, P-CAD Tools and others. Our engineering team executes schematic capture, board layout generation, timing and signal integrity analyses, design centering for manufacturing, and design verification.



PCB Manufacturing Department

Our devoted engineering team and advanced technologies provide world-class PCB manufacturing service for the industry. Based in Taiwan, we offer our professional service with RoHS requirement to overseas agents and distributors.

We supply high quality products for more than 200 customers who focus on Telecommunication, Computer Application, Aerospace, Consumption Electronics, Industrial Control, Medical Equipments etc, and mainly distribute in America, Europe, Japan and Asia-Pacific countries.

At present, we are capable to manufacture PCBs from 1 to 20+ layers. Our products consist of thick gold plating, hidden or blind hole, high frequency, metal based, metal core, flat resistance, high Tg, impedance required, environmental, thick copper, mix-material and flex-rigid.

To provide quality manufacturing and best solution for customers is our fundamental care.



Through-hole & Surface Mounting Department

Extensive ESD protected Printed Circuit Board facilities available at our factories enables us to meet the most demanding applications for both Surface Mount and Plated through Hole Technologies. These sites are equipped with state of the art convection reflow and wave soldering equipment to ensure controlled soldering of PCB components following automatic or hand placement.

High speed pick and place lines, solder paste printers and convection reflow solder ovens, automated Optical Inspection (AOI) and more are used to accomplish your orders on time.



CNC Department

Our CNC manufacturing combines sophisticated CNC machining that provide services for all of your contract manufacturing requirements.

Working from your specifications or documentation, we assist with projects and products from design, prototype, to full scale manufacturing.

Our employees have a strong customer focus ensuring the attention needed to handle your outsourcing needs.

The mechanical and electronic design departments help with your product design or modifications if necessary.

We work closely with your staff, enabling an effective and timely response. Our flexible facility provides for simultaneous outputs for many products in a time frame that meets your requirements.

Our CNC Manufacturing Advantages:

- Quality Manufacturing
- Fast reliable delivery
- Problem solving
- Expert planning
- In-house programming
- Tooling fabrication





Copyright © 2008-2011 Art Studios Entertainment Media.
All rights reserved. Printed in Taiwan R.O.C.

Art Studios Entertainment Media, ARTiX™, Ancien Gate™
and the EFI-X™ logo are registered trademarks of Art Studios Entertainment Media in the United States and/or other countries.
All other trademarks or registered trademarks are the property of their respective owners.